

1987 REGAL

Classic yet aerodynamic, formal yet stylish—Regal lives up to its name. Typified by quality workmanship, luxury and elegance, Regal maintains a special place in the hearts of the public as a proud member of the Buick family. For 1987, this smart coupe comes to you as the Regal, Regal Limited or as the muscular Regal Grand National.

ON THE OUTSIDE

Added to Regal's clean, crisp, plastisol-protected exterior for 1987 is a redesigned grille with wider vertical bars. Regal is a smart, distinguished-looking car that conveys a definite impression of success, good taste and style.

To give Regal a different appearance—that of a mean street machine—order businesslike blackout trim. You needn't bother with details; just ask for the Exterior

Sport Package. Or, for a car that has the mean look just described plus the performance to match, order Regal Grand National.

MECHANICAL

Standard on Regal and Regal Limited, the 3.8-litre 2-barrel V-6 engine which teams smoothly with a three-speed automatic transmission. A 5.0-litre V-8 engine is available.

To add more performance-oriented characteristics to Regal, order the 'T' Package. It provides Gran Touring suspension, a leather-wrapped sport steering wheel, 15" x 6" aluminum wheels and P215/65R15 Eagle GT blackwall tires.

Real enthusiasts will want to add the Turbo Package along with the 'T' Package. Included in this package is the intercooled turbocharged 3.8-litre engine that delivers 110% more power than the standard V-6, a turbo hood, a four-speed automatic transmission, 3.42 axle ratio and acoustical insulation.

The hot Grand National is also powered by the 3.8-litre turbocharged SFI V-6 with intercooler described above.

ON THE INSIDE

Slide into the cloth notchback seat and look around at all the comfort and convenience features that are standard on the 1987 Regal. From the adjustable headrest to the cut-pile carpeting and power steering, Regal aims to pamper and please. For additional pleasure and convenience, Regal offers a grand selection of available features such as ETR radio with graphic equalizer, cassette and clock; and electronic digital instrumentation.

All dressed up or lean and mean, Regal's good breeding will always show through. A modern-day descendent of a long line of traditional excellence, Regal lives up to its name.

WHAT'S NEW FOR 1987

- Plastisol paint protection added
- T Type model dropped
- 'T' Package added
- New grille
- New interior trim plate
- Turbo Package available
- Exterior Sport Package available
- Turbo T Package available

VALUE OPTION PACKAGE—CODE T1Y

Required Options:

D64 —Lighted Visor Vanity Mirror

AU3 —Power Door Locks

UM6—Cassette, ETR AM-FM Stereo Radio with Seek and Scan and Clock

U75 —Power Antenna (or US7)

And Either:

—A—Accent Stripe

Or:

D84 —Designers' Accent Paint

And Either:

P12 —Chrome-plated Wheels

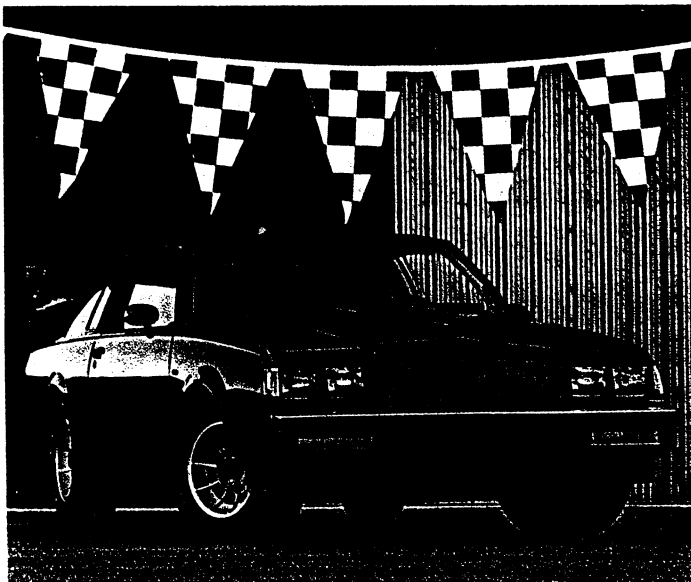
Or:

N91 —Wire Wheelcovers

Or:

N78—Aluminum Wheels

Value Credit —\$200.00 MSRP



Regal Turbo T Package

Model Availability

Regal -Coupe J47
Regal Limited-Coupe M47

Special Option Packages

T Package (Option Code Y56)

Includes: T-ornamentation; Gran Touring suspension; fast-ratio power steering; gas shock absorbers; 15" aluminum wheels; steel-belted radial-ply Eagle GT blackwall tires (P215/65R15); leather-wrapped sport steering wheel. (N.A. with WE2, WE3 or WE4)

Turbo Package (Option Code LC2)

Includes: 3.8-litre SFI intercooled turbo engine; instrument panel cluster with tachometer, turbo boost gage and trip odometer; turbo hood and ornamentation; acoustical insulation package; 3.42 axle ratio. (Y56 or WE3, C60 and MX0 required) (N.A. with WE2)

Exterior Sport Package (Option Code W02)

Includes: Blackout treatment on door locks and handles; grille, headlamp, tail lamp bezels, antenna and door edge guards, plus the following moldings: roof drip and window trim; side window reveal; wheel opening; belt reveal; windshield reveal; and rear window (rocker panel and body-side moldings are deleted). (N.A. with WE2, CB4, C04, D84, T87, U75, B93, WF6 or exterior paint codes 43 or 19)

Regal Grand National (Option Code WE2)

Includes: 3.8-litre turbo engine with intercooler, automatic transmission with overdrive, 3.42 axle ratio; Gran Touring suspension; fast-ratio power steering; sport mirrors; turbo boost gage and tachometer; trip odometer; leather-wrapped sport steering wheel; air conditioning; P215/65R15 Eagle GT blackwall tires; chrome-plated steel wheels; black: bumpers, moldings, grille and exterior trim; deck lid spoiler; full-length operating console and reclining front bucket seats.

Turbo T Package (Option Code WE4)

Includes: 3.8-litre turbo engine with intercooler, automatic transmission with overdrive, 3.42 axle ratio; Gran Touring suspension; fast-ratio power steering; sport mirrors; turbo boost gage and tachometer; trip odometer; leather-wrapped sport steering wheel; air conditioning; P215/65R15 Eagle GT blackwall tires with N89-15" aluminum wheels; black bumpers, moldings, grille and exterior trim; full-length operating console with gray bucket seats (code 393) and T-ornamentation.

Standard Equipment

Acoustical insulation package (Limited)
Antenna—fixed-mast
Battery—Delco Freedom II Plus
Belts and Buckles—color-coordinated seat and shoulder
Brakes—low drag power disc/rear drum
Bumper Protective Strips—front and rear
Bumper Guards—front and rear
Carpeting—cut-pile
Chassis Springs—computer-selected
Computer Command Control

Electronic Warning Tone—seat belt and ignition key
Engine—3.8-litre
Frame—full-perimeter
Glove Compartment Lock
Headrests—adjustable front-seat
Hood Lock—inside release
Horns—dual
Jack—side-frame
Lamp—high-mounted stop
Lights—instrument panel courtesy, door-operated dome, front ashtray, glove box, and trunk and engine compartments
Mirrors—chrome, outside rearview, left and right manual
Moldings—color-coordinated, protective, body-side
Moldings—narrow rocker panel (Regal)
Moldings—belt reveal and wide rocker panel (Limited)
Moldings—roof drip, rear quarter window and front and rear wheel opening
Moldings—bright windshield and back window
Moldings—deck lid and door frame
Multi-function Control Lever—turn signal, headlamp high/low beam and windshield wiper/washer controls
Ornamentation—stand-up hood ornament
Paint—Plastisol protection
Radio—Delco push-button AM with dual front speakers (radio may be deleted for credit)
Seat—cloth notchback bench (Regal)
Seats—cloth 55/45 notchback (Limited)
Steering—power
Steering Wheel—custom (Regal)
Steering Wheel—limited (Limited)
Suspension—coil-spring, front and rear
Tire—compact spare
Tires—steel-belted, radial-ply, all-season whitewall (P195/75R14)
Transmission—automatic
Wheelcovers—deluxe
Wipers—2-speed